

OKLAHOMA DEPARTMENT OF TRANSPORTATION					
FED. ROAD DIST. NO.	STATE	PROJ. NO.	FISCAL YEAR	SHEET NO.	TOTAL SHEETS
6	OKLA.				
DESCRIPTION		REVISIONS		DATE	

C-16-1097, NW CORNER OF SECTION 19, T1S, R11W, I.M., COMANCHE COUNTY, OK. FOUND MAG NAIL IN PLACE PER CCR FILED BY PLS 1522. USED THIS CORNER LOCATION AND FILED NEW CCR.

C-16-1107, W/4 CORNER OF SECTION 19, T1S, R11W, I.M., COMANCHE COUNTY, OK. FOUND PK NAIL IN PLACE BY PLS 1281. THIS CORNER WAS USED FOR LOCAL SURVEYS AND FITS THE CENTERLINE SURVEY BY PLUS OR MINUS ONE FOOT. USED THIS CORNER AND FILED NEW CCR.

C-16-1106, SW CORNER OF SECTION 19, T1S, R11W, I.M., COMANCHE COUNTY, OK. FOUND SQUARE BOLT IN PLACE PER CCR'S FILED BY PLS 1281 AND 1285. USED ON THIS SURVEY AND FILED NEW CCR.

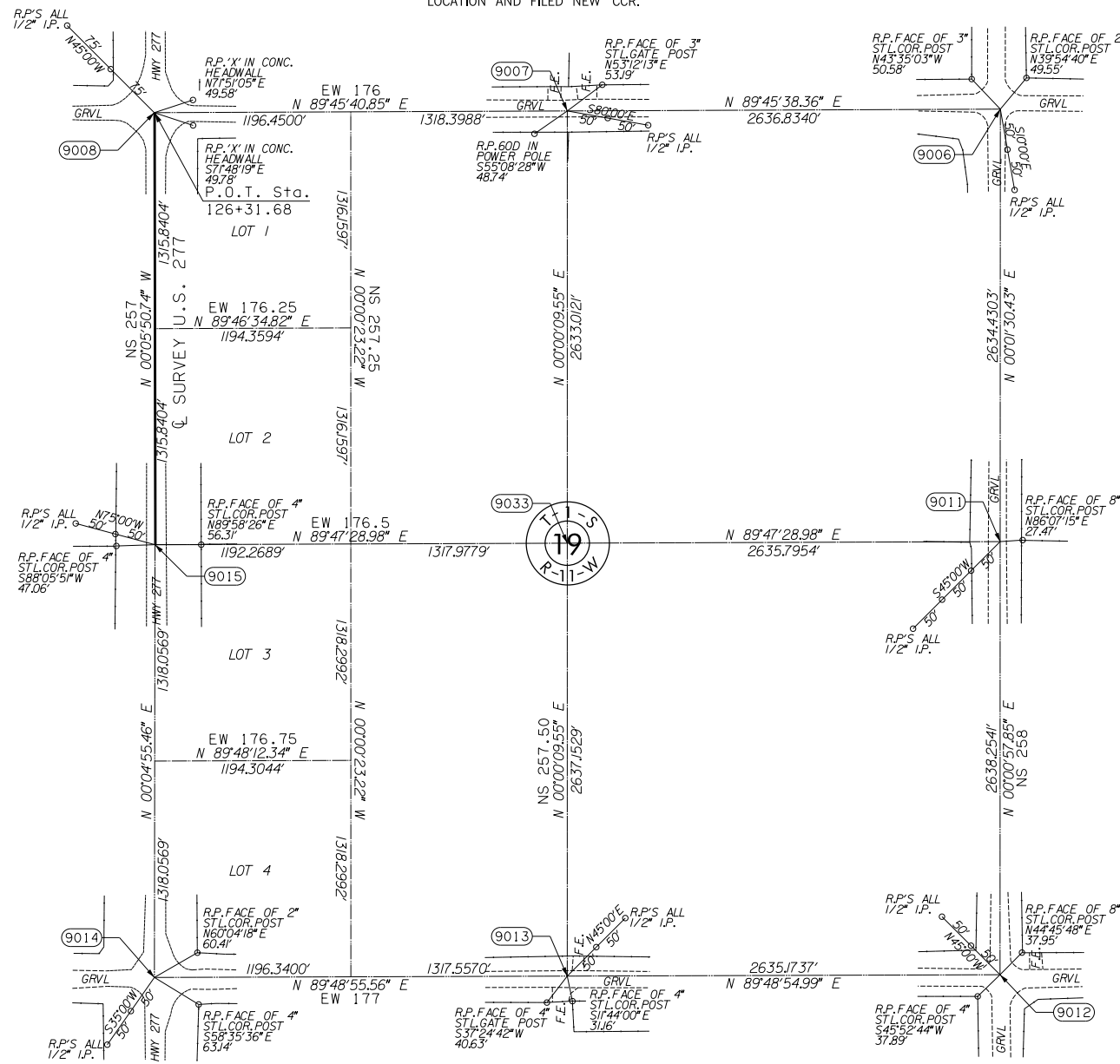
C-16-1104, N/4 CORNER OF SECTION 19, T1S, R11W, I.M., COMANCHE COUNTY, OK. FOUND #4 REBAR IN PLACE PER CCR FILED BY PLS 1285. USED THIS CORNER LOCATION AND FILED NEW CCR.

C-16-1103, NE CORNER OF SECTION 19, T1S, R11W, I.M., COMANCHE COUNTY, OK. FOUND #4 REBAR 18 INCHES DEEP PER CCR FILED BY PLS 1285. THIS CORNER FITS SURVEYS PERFORMED WITHIN SECTION 18. SET #6 REBAR ON TOP OF #4 REBAR AND FILED NEW CCR FOR THIS CORNER LOCATION.

C-16-1108, E/4 CORNER OF SECTION 19, T1S, R11W, I.M., COMANCHE COUNTY, OK. FOUND #4 REBAR IN PLACE PER CCR FILED BY PLS 1281. THIS CORNER FITS SURVEYS PERFORMED WITHIN SAID SECTION 19. USED THIS CORNER AND FILED NEW CCR.

C-16-1109, SE CORNER OF SECTION 19, T1S, R11W, I.M., COMANCHE COUNTY, OK. FOUND #4 REBAR THAT FITS REFERENCES BY PLS 1285. THIS APPEARS TO BE SAME CORNER THAT PLS 1281 FILED CCR ON. (COULD NOT MAKE SENCE OF PLS 1281 REFERENCES). USED THIS CORNER AND FILED NEW CCR.

C-16-1110, S/4 CORNER OF SECTION 19, T1S, R11W, I.M., COMANCHE COUNTY, OK. FOUND #4 REBAR IN PLACE PER CCR FILED BY PLS 1285. THIS CORNER FITS MONUMENTS 0.5 MILES EAST AND WEST OF THIS LOCATION. USED THIS CORNER AND FILED NEW CCR.



SCALE:  
1" = 500'

OKLAHOMA DEPARTMENT OF TRANSPORTATION			
SURVEY DIVISION			
<b>SURVEY DATA SHEET</b>			
PLS	JLC		
DRAWN	BJG		
CHECKED	JLC		
APPROVED	JLC		
CREW	CARROLL	SWO 4752(1)	STATE JOB NO. 27968(04) SHEET NO. S011

SDS    OF